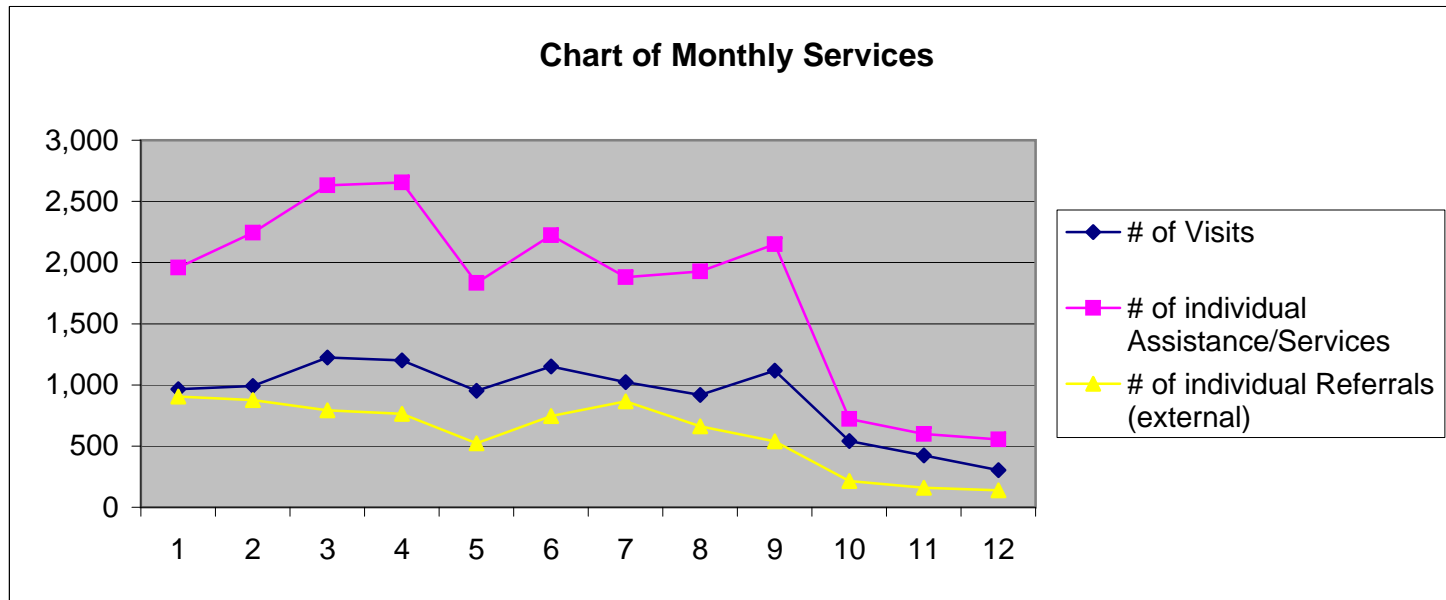




The Jesse Tree 2010 Annual Report

"Connecting, Rebuilding, Uplifting"
General Statistics by Month

	Jan.	Feb.	Mar.	Apr.	May	June	July	Aug.	Sept.	Oct.	Nov.	Dec.	Total
# of Unique Clients Seen	796	793	923	934	810	970	858	734	981	459	373	262	8,893
# of Family Members of Clients in Household	1,496	1,399	1,579	1,621	1,423	1,682	1,548	1,408	1,662	705	568	458	15,549
# of New Clients Seen	191	178	174	233	159	229	284	305	226	79	39	79	2,176
# of Visits	966	992	1,225	1,201	953	1,151	1,023	918	1,116	542	424	303	10,814
# of individual Assistance/Services	1,958	2,243	2,630	2,654	1,833	2,222	1,880	1,928	2,151	722	598	555	21,374
Total Value of Assistance Services	\$118,827	\$120,755	\$148,758	\$155,538	\$114,016	\$133,614	\$122,493	\$130,245	\$122,410	\$62,251	\$33,459	\$37,831	\$1,300,198
# of individual Referrals (external)	904	877	793	763	523	745	866	661	538	215	160	139	7,184
Total Estimated Value of Referrals	\$237,468	\$272,570	\$211,585	\$241,374	\$133,657	\$214,530	\$295,742	\$207,732	\$149,050	\$53,323	\$37,171	\$55,569	\$2,109,771



Note: SSBG funding ran out 9/30/10 so 4th Qtr numbers decreased drastically due to funding.

of Unique Clients Seen = this number represents the count of unique individuals, representing a household, who were registered as clients at The Jesse Tree and who came in throughout the year. These individuals may have come into the Jesse Tree more than once, but we are only counting them 1x the year.

"A shoot will come up from the stem of Jesse; from his roots a branch will bear fruit." Isaiah (11:1)



The Jesse Tree 2010 Annual Report

"Connecting, Rebuilding, Uplifting"

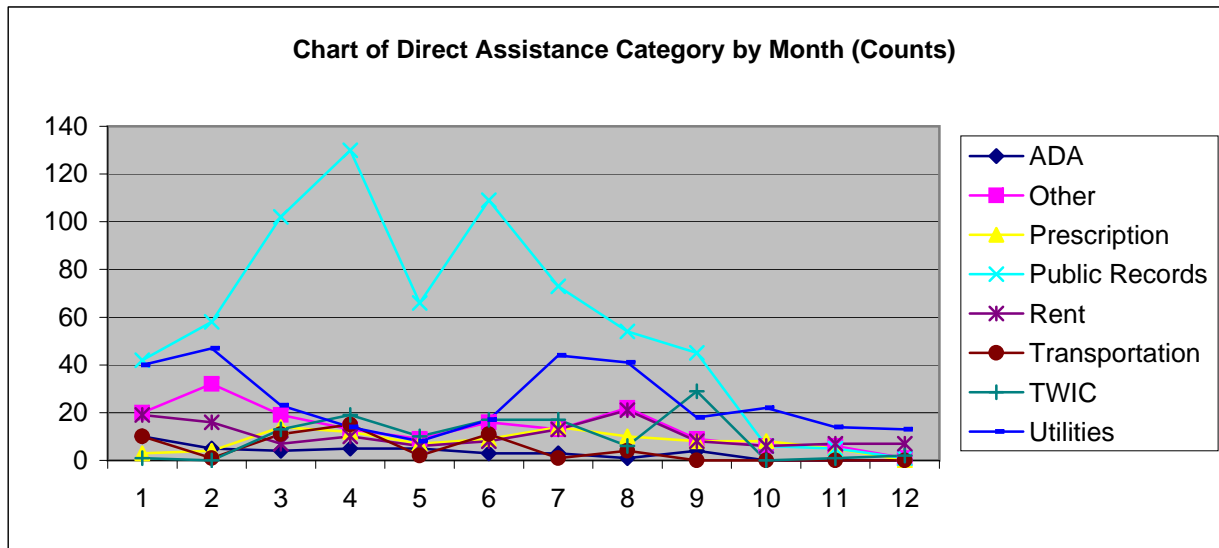
Direct Assistance by Month

Total Count

Assistance Category	Jan.	Feb.	Mar.	Apr.	May	June	July	Aug.	Sept.	Oct.	Nov.	Dec.	Total
ADA	10	5	4	5	5	3	3	1	4	0	0	0	40
Other	20	32	19	13	9	16	13	22	9	6	6	1	166
Prescription	3	4	14	12	7	9	14	10	8	8	5	0	94
Public Records	42	58	102	130	66	109	73	54	45	6	5	1	691
Rent	19	16	7	10	6	8	13	21	8	6	7	7	128
Transportation	10	1	11	15	2	11	1	4	0	0	0	0	55
TWIC	1	0	13	19	10	17	17	6	29	0	1	2	115
Utilities	40	47	23	14	8	17	44	41	18	22	14	13	301
	145	163	193	218	113	190	178	159	121	48	38	24	1,590

Total Cost

Assistance Category	Jan.	Feb.	Mar.	Apr.	May	June	July	Aug.	Sept.	Oct.	Nov.	Dec.	Total
ADA	\$5,763	\$3,237	\$1,800	\$1,142	\$2,399	\$1,008	\$2,115	\$182	\$1,384	\$0	\$0	\$0	\$19,030.01
Other	\$2,435	\$1,694	\$2,458	\$657	\$1,323	\$1,151	\$737	\$2,304	\$455	\$1,060	\$315	\$40	\$14,627.77
Prescription	\$785	\$211	\$714	\$602	\$233	\$472	\$993	\$882	\$355	\$355	\$235	\$0	\$5,838.26
Public Records	\$931	\$1,455	\$2,616	\$2,835	\$1,574	\$2,374	\$1,831	\$1,247	\$879	\$140	\$161	\$16	\$16,056.65
Rent	\$1,518	\$1,718	\$1,056	\$950	\$1,200	\$1,425	\$1,100	\$1,985	\$750	\$450	\$650	\$600	\$13,401.68
Transportation	\$205	\$20	\$211	\$358	\$149	\$266	\$20	\$267	\$0	\$0	\$0	\$0	\$1,495.75
TWIC	\$133	\$0	\$1,386	\$2,436	\$1,171	\$2,253	\$2,055	\$674	\$3,843	\$0	\$133	\$265	\$14,345.50
Utilities	\$3,132	\$6,133	\$2,658	\$2,090	\$939	\$2,284	\$5,408	\$4,251	\$1,180	\$1,739	\$1,432	\$1,137	\$32,383.13
	\$14,902	\$14,467	\$12,899	\$11,069	\$8,987	\$11,233	\$14,258	\$11,792	\$8,845	\$3,744	\$2,926	\$2,058	\$117,178.75



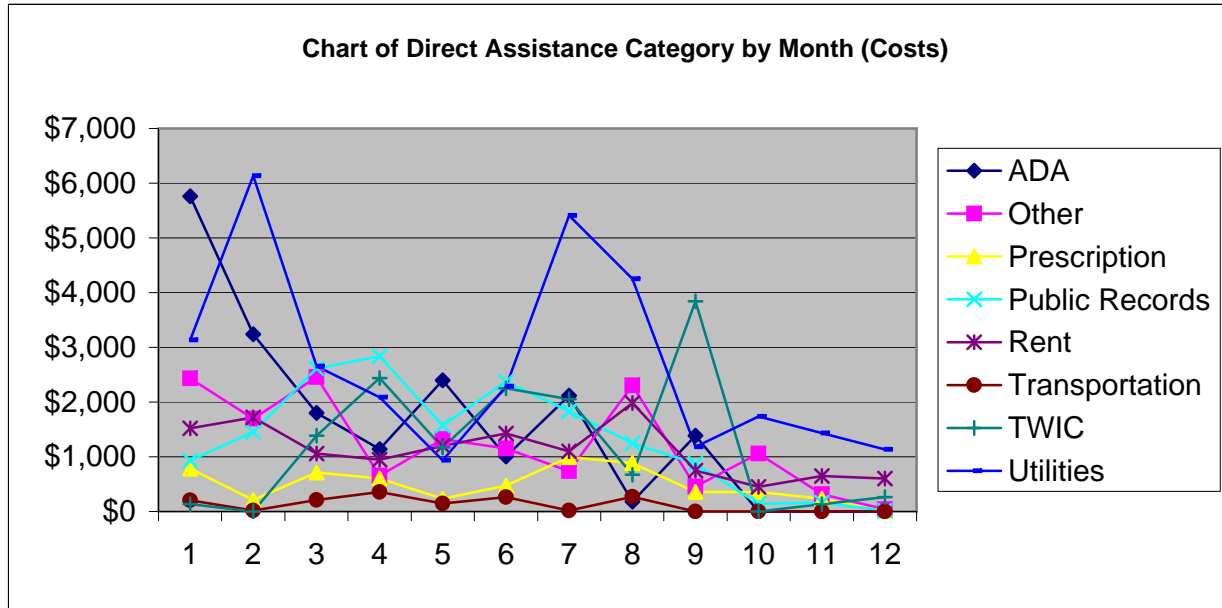
"A shoot will come up from the stem of Jesse; from his roots a branch will bear fruit." Isaiah (11:1)



The Jesse Tree 2010 Annual Report

"Connecting, Rebuilding, Uplifting"

Direct Assistance by Month





The Jesse Tree 2010 Annual Report
 "Connecting, Rebuilding, Uplifting"
 Assistance/Services Other than Direct Assistance by Month

Total Count

Category	Jan.	Feb.	Mar.	Apr.	May	June	July	Aug.	Sept.	Oct.	Nov.	Dec.	Total
Case Management	675	645	836	823	600	785	747	717	734	173	166	223	7,124
Chronic Conditions Mgmt	69	142	155	139	64	101	64	114	117	106	52	40	1,163
Diabetic Supplies	21	28	15	10	20	14	17	15	39	5	11	9	204
Disaster Preparedness/Relief	132	346	227	280	212	364	273	198	188	33	21	33	2,307
Health Equip Loan Prog	22	7	17	19	11	13	13	14	20	5	6	14	161
Medical Enrollment/Other	1	6	2	5	2	4	1	3	2	3	1		30
Nutrition	479	508	624	643	562	564	461	567	727	294	240	185	5,854
Other	25	22	28	21	11	19	6	3	2	1	7		145
Personal Supplies	273	254	370	351	150	69	28	67	140	19	13	7	1,741
Prescriptions	51	49	58	47	38	43	60	35	26	13	34	15	469
Rent	35	34	62	64	46	47	31	36	35	22	8	5	425
Transportation	30	39	43	34	4	9	1	0	0	0	1	0	161
	1,813	2,080	2,437	2,436	1,720	2,032	1,702	1,769	2,030	674	560	531	19,784

Total Cost

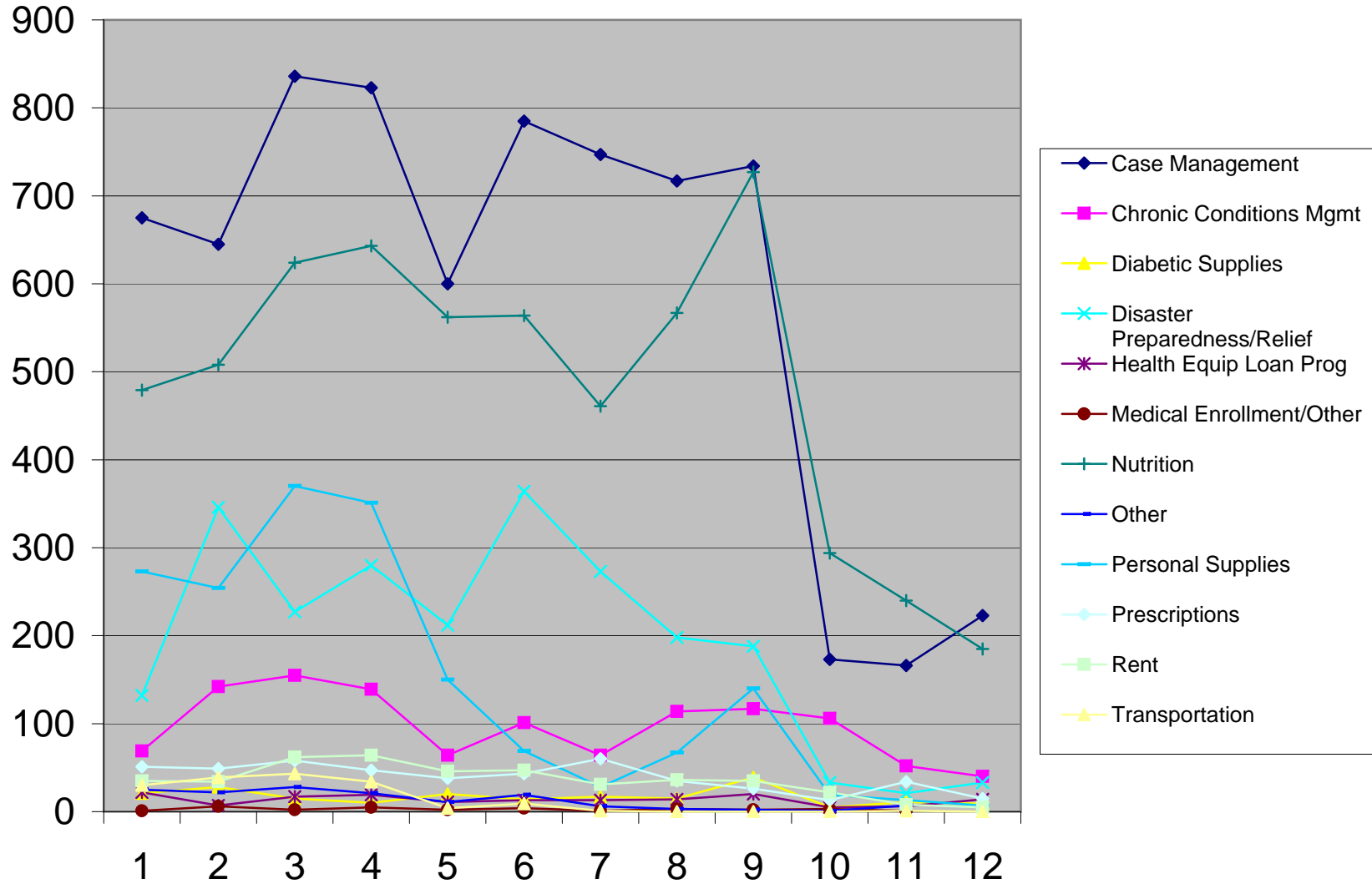
Category	Jan.	Feb.	Mar.	Apr.	May	June	July	Aug.	Sept.	Oct.	Nov.	Dec.	Total
Case Management	\$50,425	\$48,000	\$62,224	\$61,375	\$44,943	\$58,282	\$55,860	\$53,675	\$55,000	\$12,975	\$12,450	\$16,850	\$532,059
Chronic Conditions Mgmt	\$1,720	\$4,370	\$5,300	\$5,325	\$2,825	\$3,650	\$1,975	\$3,725	\$3,750	\$3,280	\$1,455	\$1,390	\$38,765
Diabetic Supplies	\$890	\$1,295	\$690	\$490	\$950	\$690	\$850	\$700	\$1,885	\$245	\$520	\$415	\$9,620
Disaster Preparedness/Relief	\$3,800	\$9,088	\$5,980	\$7,692	\$6,949	\$11,375	\$9,779	\$10,988	\$5,009	\$850	\$540	\$825	\$72,874
Health Equip Loan Prog	\$7,124	\$2,925	\$3,873	\$7,845	\$3,396	\$5,518	\$5,490	\$11,543	\$10,973	\$21,525	\$4,585	\$7,565	\$92,362
Medical Enrollment/Other	\$75	\$575	\$150	\$1,100	\$650	\$800	\$75	\$225	\$85	\$190	\$75		\$4,000
Nutrition	\$16,209	\$16,734	\$20,502	\$21,568	\$19,230	\$19,401	\$17,261	\$21,140	\$26,544	\$9,115	\$6,903	\$7,190	\$201,797
Other	\$305	\$440	\$455	\$245	\$120	\$190	\$127	\$55	\$39	\$5	\$50		\$2,031
Personal Supplies	\$4,878	\$4,295	\$4,935	\$4,847	\$1,580	\$835	\$375	\$720	\$1,432	\$155	\$185	\$80	\$24,318
Prescriptions	\$2,734	\$1,930	\$2,942	\$1,697	\$1,751	\$2,281	\$3,568	\$2,257	\$882	\$442	\$1,251	\$958	\$22,694
Rent	\$14,325	\$14,775	\$26,808	\$30,700	\$22,495	\$18,970	\$12,825	\$13,425	\$7,966	\$9,725	\$2,500	\$500	\$175,014
Transportation	\$1,440	\$1,860	\$2,000	\$1,585	\$140	\$390	\$50	\$0	\$0	\$0	\$20	\$0	\$7,485
	\$103,925	\$106,288	\$135,859	\$144,469	\$105,029	\$122,382	\$108,236	\$118,453	\$113,565	\$58,507	\$30,534	\$35,773	\$1,183,020

"A shoot will come up from the stem of Jesse; from his roots a branch will bear fruit." Isaiah (11:1)



The Jesse Tree 2010 Annual Report
"Connecting, Rebuilding, Uplifting"
Assistance/Services Other than Direct Assistance by Month

Chart of Assistance/Services Other Than DA by Month (Counts)





The Jesse Tree 2010 Annual Report

"Connecting, Rebuilding, Uplifting"
Referrals (External) by Month

Total Count

Category	Jan.	Feb.	Mar.	Apr.	May	June	July	Aug.	Sept.	Oct.	Nov.	Dec.	Total
Case Management	81	99	90	80	64	95	150	89	44	26	18	17	853
Education	0	1	0	0	0	0	0	0	0	0	0	1	2
Employment	20	11	10	14	8	7	12	18	9	4	1	3	117
Family Support	4	5	4	4	8	4	11	8	1	0	0	1	50
Financial	290	260	211	188	133	198	297	250	169	77	51	55	2,179
Legal	15	21	15	11	8	10	13	13	4	5	1	3	119
Medical	154	104	133	118	92	123	127	114	124	53	52	10	1,204
Ministerial	4	4	0	2	3	2	2	1	0	0	0	0	18
Nutrition	283	291	263	272	154	208	146	83	81	14	5	19	1,819
Other	3	21	21	22	2	17	4	6	1	0	1	0	98
Shelter	33	37	13	13	8	21	18	16	15	2	2	0	178
Social	17	22	33	39	42	57	83	62	90	33	29	30	537
Transportation	0	1	0	0	1	3	3	1	0	1	0	0	10
	904	877	793	763	523	745	866	661	538	215	160	139	7,184

Total Cost

Category	Jan.	Feb.	Mar.	Apr.	May	June	July	Aug.	Sept.	Oct.	Nov.	Dec.	Total
Case Management	\$32,400	\$34,425	\$29,700	\$18,825	\$17,625	\$35,475	\$76,050	\$40,425	\$15,450	\$14,775	\$7,425	\$12,075	\$334,650
Education	\$0	\$25	\$0	\$0	\$0	\$0	\$0	\$0	\$0	\$0	\$0	\$25	\$50
Employment	\$1,500	\$825	\$750	\$1,050	\$600	\$525	\$650	\$1,150	\$675	\$300	\$75	\$225	\$8,325
Family Support	\$3,150	\$4,650	\$300	\$1,725	\$4,875	\$1,725	\$9,375	\$4,875	\$75	\$0	\$0	\$1,500	\$32,250
Financial	\$97,225	\$114,075	\$85,050	\$79,175	\$52,850	\$80,675	\$99,700	\$105,575	\$63,400	\$25,900	\$16,725	\$25,750	\$846,100
Legal	\$1,125	\$1,575	\$1,125	\$825	\$600	\$750	\$975	\$975	\$300	\$375	\$75	\$225	\$8,925
Medical	\$38,870	\$53,390	\$36,600	\$86,075	\$18,780	\$41,245	\$54,220	\$20,560	\$36,660	\$7,130	\$7,045	\$1,715	\$402,290
Ministerial	\$100	\$100	\$0	\$50	\$75	\$50	\$50	\$25	\$0	\$0	\$0	\$0	\$450
Nutrition	\$59,233	\$59,575	\$55,325	\$50,794	\$34,582	\$46,780	\$50,322	\$31,962	\$28,805	\$3,293	\$4,966	\$13,304	\$438,941
Other	\$30	\$210	\$210	\$220	\$20	\$170	\$40	\$60	\$10	\$0	\$10	\$0	\$980
Shelter	\$2,110	\$2,445	\$1,050	\$635	\$1,175	\$3,585	\$1,560	\$550	\$1,100	\$700	\$125	\$0	\$15,035
Social	\$1,725	\$1,250	\$1,475	\$2,000	\$2,450	\$3,475	\$2,725	\$1,550	\$2,575	\$825	\$725	\$750	\$21,525
Transportation	\$0	\$25	\$0	\$0	\$25	\$75	\$75	\$25	\$0	\$25	\$0	\$0	\$250
	\$237,468	\$272,570	\$211,585	\$241,374	\$133,657	\$214,530	\$295,742	\$207,732	\$149,050	\$53,323	\$37,171	\$55,569	\$2,109,771

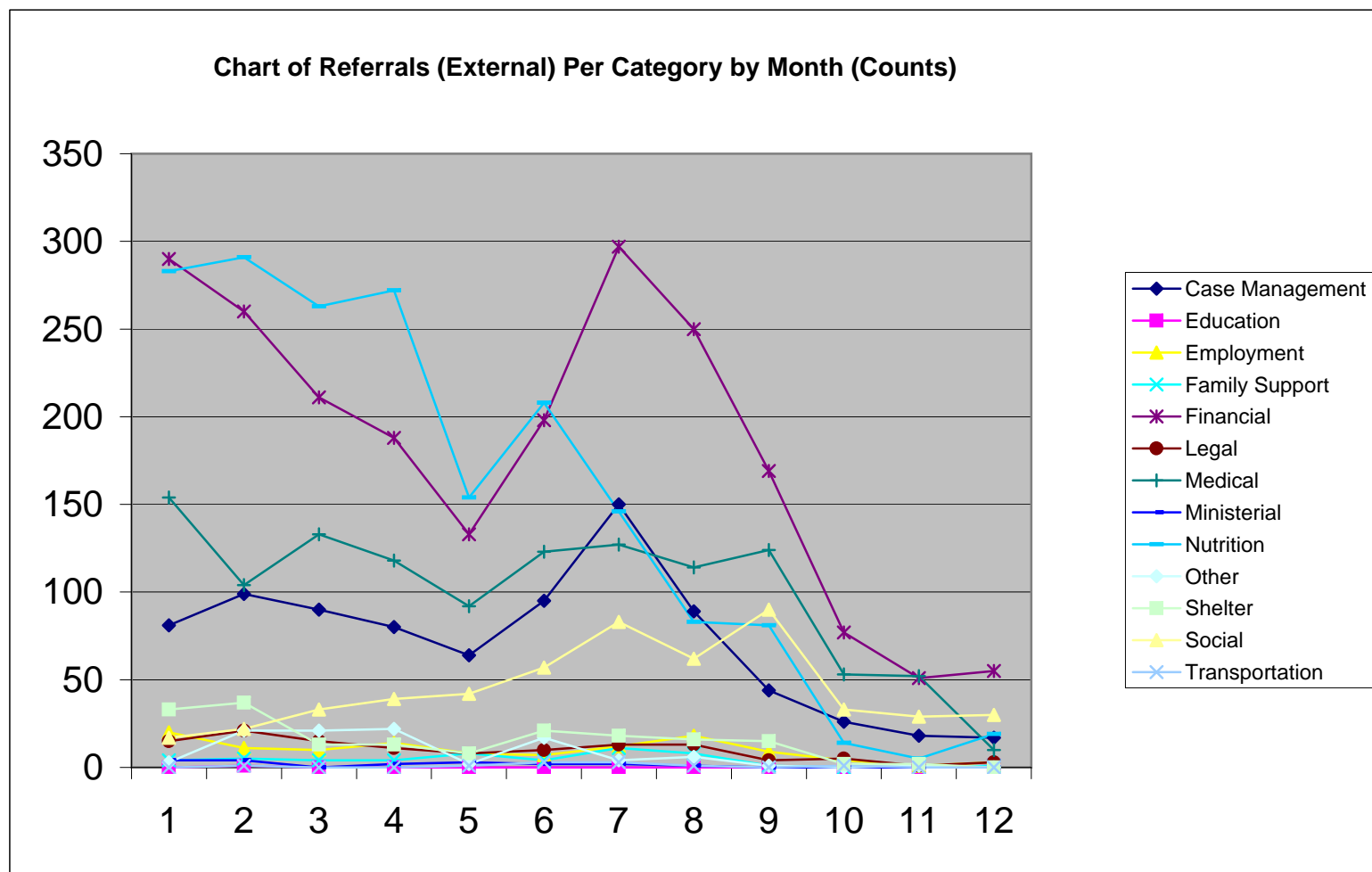
"A shoot will come up from the stem of Jesse; from his roots a branch will bear fruit." Isaiah (11:1)



The Jesse Tree 2010 Annual Report

"Connecting, Rebuilding, Uplifting"

Referrals (External) by Month





The Jesse Tree 2010 Annual Report

"Connecting, Rebuilding, Uplifting"

Classes by Month

# of Classes	Jan.	Feb.	Mar.	Apr.	May	June	July	Aug.	Sept.	Oct.	Nov.	Dec.	Total
Chronic Conditions Mgmt	0	0	1	3	2	4	3	2	0	2	2	1	20
Diabetes	5	6	6	6	6	5	6	5	3	7	1	2	58
Diabetes Spanish	4	3	3	3	3	3	5	6	4	8	7	3	52
Hypertension	0	2	1	1	0	0	0	0	0	0	0	0	4
Nutrition	0	1	0	0	0	0	0	0	0	0	0	0	1
Stress	4	1	0	0	0	0	0	0	0	0	0	0	5

140

# of Attendees	Jan.	Feb.	Mar.	Apr.	May	June	July	Aug.	Sept.	Oct.	Nov.	Dec.	Total
Chronic Conditions Mgmt	0	0	12	16	15	26	14	11	42	6	11	5	158
Diabetes	81	102	76	53	50	64	76	75	53	65	13	16	724
Diabetes Spanish	82	83	50	27	34	25	53	54	0	74	52	29	563
Hypertension	0	16	21	11	0	0	0	0	0	0	0	0	48
Nutrition	0	2	0	0	0	0	0	0	0	0	0	0	2
Stress	63	36	0	0	0	0	0	0	0	0	0	0	99

1594

# of Family Members per Household	Jan.	Feb.	Mar.	Apr.	May	June	July	Aug.	Sept.	Oct.	Nov.	Dec.	Total
Chronic Conditions Mgmt	0	0	25	34	35	39	21	16	76	8	22	6	282
Diabetes	219	238	165	117	98	160	133	118	117	116	27	30	1538
Diabetes Spanish	290	283	169	63	65	82	164	146	0	186	103	64	1615
Hypertension	0	34	39	15	0	0	0	0	0	0	0	0	88
Nutrition	0	4	0	0	0	0	0	0	0	0	0	0	4
Stress	177	103	0	0	0	0	0	0	0	0	0	0	280

3807



The Jesse Tree 2010 Annual Report
 "Connecting, Rebuilding, Uplifting"
 Food Fairs by Month

Month	# of FF	0-17	18-64	65+	Unk	#ADULT	C	B	H	A	O	Unk	Sum Eth	Sum Ages	HH
Jan.	9	1,425	2,052	448	3	2,500	809	1,179	1,815	42	12	71	3,928	3,928	1,223
Feb.	10	1,378	2,284	526	31	1,982	756	1,230	2,105	25	43	60	4,219	4,219	1,410
Mar.	10	1,533	2,511	684	2	3,195	1,183	1,560	1,871	38	22	56	4,730	4,730	1,649
Totals	29	4,336	6,847	1,658	36	7,677	2,748	3,969	5,791	105	77	187	12,877	12,877	4,282
Apr.	11	1,805	3,108	1,005	5	2,030	1,357	2,118	2,201	34	70	143	5,923	5,923	2,073
May	8	1,268	2,038	576	21	2,155	751	1,480	1,572	22	39	39	3,903	3,903	1,328
June	8	1,098	1,797	805	5	2,602	921	1,292	1,204	44	24	220	3,705	3,705	1,287
Totals	27	4,171	6,943	2,386	31	6,787	3,029	4,890	4,977	100	133	402	13,531	13,531	4,688
July	11	1,404	2,149	649	3	2,798	957	1,391	1,635	25	49	148	4,205	4,205	1,421
Aug.	10	1,513	2,320	864	4	3,184	976	1,677	1,822	21	54	151	4,701	4,701	1,576
Sept.	8	1,117	1,713	582	6	2,295	733	1,111	1,455	14	31	74	3,418	3,418	1,233
Totals	29	4,034	6,182	2,095	13	8,277	2,666	4,179	4,912	60	134	373	12,324	12,324	4,230
Oct.	11	1,356	2,208	686	2	2,894	894	1,294	1,929	45	15	75	4,252	4,252	1,569
Nov.	12	2,022	2,842	852	36	3,694	1,151	2,258	1,999	20	0	324	5,752	5,752	1,938
Dec.	7	1,405	1,825	411	8	2,236	619	1,365	1,496	14	60	95	3,649	3,649	1,171
Totals	30	4,783	6,875	1,949	46	8,824	2,664	4,917	5,424	79	75	494	13,653	13,653	4,678
	115	17,324	26,847	8,088	126	31,565	11,107	17,955	21,104	344	419	1,456	52,385	52,385	17,878

"A shoot will come up from the stem of Jesse; from his roots a branch will bear fruit." Isaiah (11:1)



The Jesse Tree 2010 Annual Report

"Connecting, Rebuilding, Uplifting"

Pantry by Month

Month	0-17	18-64	65+	Unk	#ADULT	C	B	H	A	O	Unk	Sum Eth	Sum Ages	HH
Jan.	319	597	16	2	613	257	295	342	0	3	37	934	934	389
Feb.	287	505	36	1	541	169	212	394	3	1	50	829	829	344
Mar.	309	530	26	4	556	239	273	271	1	15	70	869	869	357
Totals	915	1,632	78	7	1,710	665	780	1,007	4	19	157	2,632	2,632	1,090
Apr.	340	576	40	6	616	231	292	327	0	7	105	962	962	377
May	270	540	21	3	561	229	288	251	0	7	59	834	834	350
June	57	153	8	0	161	56	61	73	7	7	14	218	218	104
Totals	667	1,269	69	9	1,338	516	641	651	7	21	178	2,014	2,014	831
July	252	515	38	2	535	224	264	239	0	10	70	807	807	372
Aug.	187	464	38	6	502	231	246	178	0	15	25	695	695	348
Sept.	272	509	25	1	534	291	258	215	0	2	41	807	807	344
Totals	711	1,488	101	9	1,571	746	768	632	0	27	136	2,309	2,309	1,064
Oct.	75	149	13	0	162	85	78	58	0	0	16	237	237	107
Nov.	129	292	33	1	325	106	197	126	0	0	26	455	455	183
Dec.	93	194	6	1	200	99	65	75	0	4	51	294	294	120
Totals	297	635	52	2	687	290	340	259	0	4	93	986	986	410
	2,590	5,024	300	27	5,306	2,217	2,529	2,549	11	71	564	7,941	7,941	3,395



The Jesse Tree 2010 Annual Report

"Connecting, Rebuilding, Uplifting"

Family Food Boxes by Month

Month	0-17	18-64	65+	Unk	#ADULT	C	B	H	A	O	Unk	Sum Eth	Sum Ages	HH
Jan.	86	113	2	0	115	51	42	89	0	7	12	201	201	62
Feb.	38	88	19	0	107	13	98	12	0	0	22	145	145	43
Mar.	0	1	0	0	1	1	0	0	0	0	0	1	1	1
Totals	124	202	21	0	223	65	140	101	0	7	34	347	347	106
Apr.	6	5	0	0	5	0	3	8	0	0	0	11	11	3
May	2	3	0	0	0	0	5	0	0	0	0	5	5	5
June	0	0	0	0	0	0	0	0	0	0	0	0	0	0
Totals	8	8	0	0	5	0	8	8	0	0	0	16	16	8
July	5	4	0	0	4	0	1	8	0	0	0	9	9	3
Aug.	0	0	0	0	0	0	0	0	0	0	0	0	0	0
Sept.	4	23	4	0	27	12	13	6	0			31	31	15
Totals	9	27	4	0	31	12	14	14	0	0	0	40	40	18
Oct.	0	0	0	0	0	0	0	0	0	0	0	0	0	0
Nov.	175	204	8	0	212	35	81	241	0	0	30	387	387	81
Dec.	0	0	0	0	0	0	0	0	0	0	0	0	0	0
Totals	175	204	8	0	212	35	81	241	0	0	30	387	387	81
	316	441	33	0	471	112	243	364	0	7	64	790	790	213



The Jesse Tree 2010 Annual Report

"Connecting, Rebuilding, Uplifting"
Senior Food Boxes by Month

Month	0-17	18-64	65+	Unk	#ADULT	C	B	H	A	O	Unk	Sum Eth	Sum Ages	HH
Jan.	0	33	70	0	103	45	46	12	0	0	0	103	103	101
Feb.	0	60	120	1	180	62	94	24	0	0	1	181	181	180
Mar.	0	59	92	105	151	47	73	28	0	0	108	256	256	252
Totals	0	152	282	106	434	154	213	64	0	0	109	540	540	533
Apr.	0	66	121	0	187	67	85	30	0	0	5	187	187	185
May	3	65	125	0	190	66	86	37	0	0	4	193	193	188
June	7	63	103	0	18	53	74	26	0	4	16	173	173	158
Totals	10	194	349	0	395	186	245	93	0	4	25	553	553	531
July	0	56	103	0	159	56	67	27	0	2	7	159	159	159
Aug.	5	57	98	0	155	52	80	23	0	1	4	160	160	154
Sept.	0	67	107	0	174	61	83	29	0	0	1	174	174	173
Totals	5	180	308	0	488	169	230	79	0	3	12	493	493	486
Oct.	15	59	106	1	165	58	73	40	0	1	9	181	181	170
Nov.	0	52	95	0	147	46	66	27	0	1	7	147	147	147
Dec.	0	52	96	0	148	46	67	27	0	1	7	148	148	147
Totals	15	163	297	1	460	150	206	94	0	3	23	476	476	464
	30	689	1,236	107	1,777	659	894	330	0	10	169	2,062	2,062	2,014



The Jesse Tree 2010 Annual Report

"Connecting, Rebuilding, Uplifting"

Hospitality & Snack Pack by Month

Hospitality

Month	0-17	18-64	65+	Unk	#ADULT	C	B	H	A	O	Unk	Sum Eth	Sum Ages	HH
Jan.	3	3	0	0	3	0	1	5	0	0	0	6	6	2
Feb.	0	0	0	0	0	0	0	0	0	0	0	0	0	0
Mar.	0	0	0	0	0	0	0	0	0	0	0	0	0	0
Totals	3	3	0	0	3	0	1	5	0	0	0	6	6	2
Apr.	0	0	0	0	0	0	0	0	0	0	0	0	0	0
May	0	0	0	0	0	0	0	0	0	0	0	0	0	0
June	3	41	9	0	50	0	1	6	0	0	46	53	53	27
Totals	3	41	9	0	50	0	1	6	0	0	46	53	53	27
July	12	53	9	2	62	24	38	13	0	0	1	76	76	49
Aug.	36	152	12	0	164	79	86	18	0	2	15	200	200	105
Sept.	44	211	9	0	220	81	99	72	0	6	6	264	264	159
Totals	92	416	30	2	446	184	223	103	0	8	22	540	540	313
Oct.	19	23	6	0	29	17	10	17	0	0	4	48	48	25
Nov.	24	46	15	0	61	9	48	25	0	0	3	85	85	25
Dec.	10	16	1	0	17	10	2	4	0	0	11	27	27	13
Totals	53	85	22	0	107	36	60	46	0	0	18	160	160	63
	151	545	61	2	606	220	285	160	0	8	86	759	759	405



The Jesse Tree 2010 Annual Report

"Connecting, Rebuilding, Uplifting"
Hospitality & Snack Pack by Month

Snack Pack

Month	0-17	18-64	65+	Unk	#ADULT	C	B	H	A	O	Unk	Sum Eth	Sum Ages	HH
Jan.	0	20	0	0	20	7	7	2	0	0	4	20	20	18
Feb.	0	0	0	0	0	0	0	0	0	0		0	0	0
Mar.	0	0	0	0	0	0	0	0	0	0	0	0	0	0
Totals	0	20	0	0	20	7	7	2	0	0	4	20	20	18
Apr.	0	0	0	0	0	0	0	0	0	0	0	0	0	0
May	0	0	0	0	0	0	0	0	0	0	0	0	0	0
June	0	0	0	0	0	0	0	0	0	0	0	0	0	0
Totals	0	0	0	0	0	0	0	0	0	0	0	0	0	0
July	0	0	0	0	0	0	0	0	0	0	0	0	0	0
Aug.	0	0	0	0	0	0	0	0	0	0	0	0	0	0
Sept.	3	12	0	0	12	2	10	3	0	0	0	15	15	8
Totals	3	12	0	0	12	2	10	3	0	0	0	15	15	8
Oct.	9	1	6	0	7	7	2	7	0	0	0	16	16	8
Nov.	9	7	2	0	9	7	4	7	0	0	0	18	18	5
Dec.	0	0	0	0	0	0	0	0	0	0	0	0	0	0
Totals	18	8	8	0	16	14	6	14	0	0	0	34	34	13
	21	40	8	0	48	23	23	19	0	0	4	69	69	39