



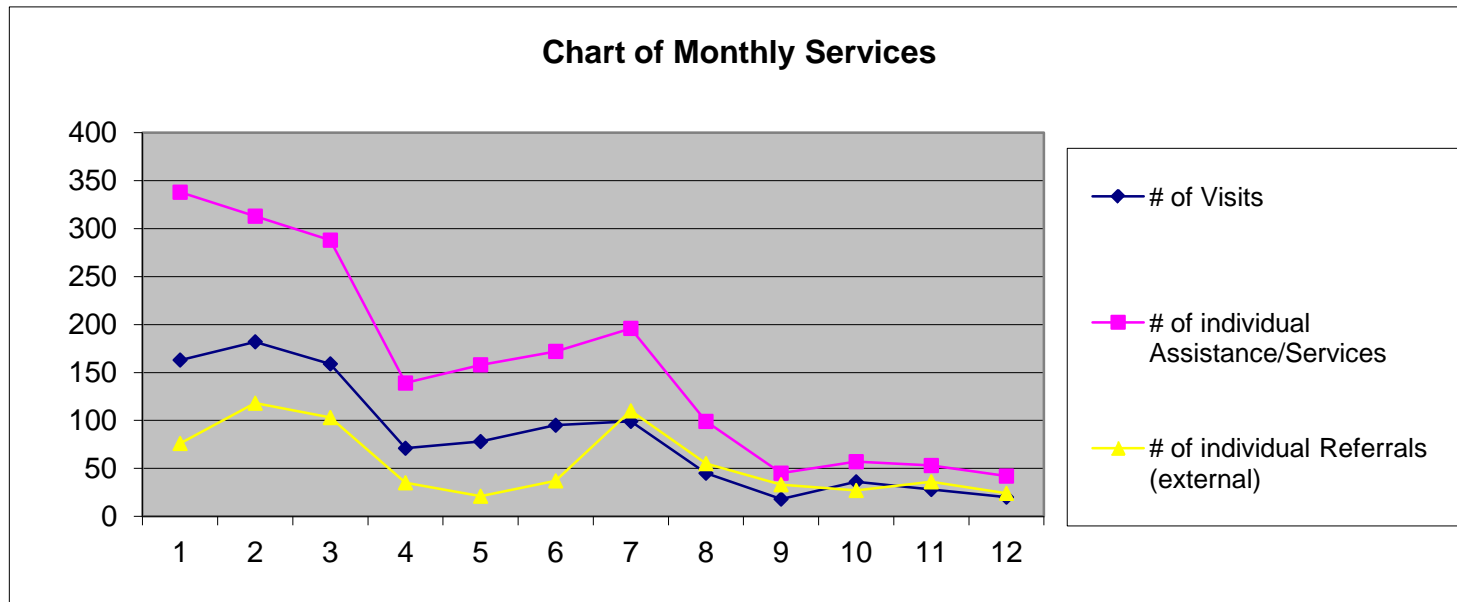
## The Jesse Tree 2012 Annual Report

"Connecting, Rebuilding, Uplifting"

### General Statistics by Month

Data Taken from WebCare (Case Mgmt Software)

	Jan.	Feb.	Mar.	Apr.	May	June	July	Aug.	Sept.	Oct.	Nov.	Dec.	Total
# of Unique Clients Seen	127	140	127	67	71	80	84	41	18	35	28	19	<b>837</b>
# of Family Members of Clients in Household	230	288	238	112	146	134	157	65	24	59	36	25	<b>1,514</b>
# of New Clients Seen	27	37	49	21	28	33	45	16	8	24	14	6	<b>308</b>
# of Visits	163	182	159	71	78	95	99	45	18	36	28	20	<b>994</b>
# of individual Assistance/Services	338	313	288	139	158	172	196	99	45	57	53	42	<b>1,900</b>
Total Value of Assistance Services	\$25,722	\$21,242	\$27,343	\$19,408	\$22,142	\$25,922	\$23,864	\$11,497	\$8,889	\$11,591	\$7,778	\$5,248	<b>\$210,645</b>
# of individual Referrals (external)	76	118	103	35	21	37	110	55	33	27	36	24	<b>675</b>
Total Estimated Value of Referrals	\$10,535	\$18,936	\$22,361	\$3,070	\$10,190	\$4,115	\$46,860	\$7,680	\$4,195	\$3,415	\$3,940	\$2,540	<b>\$137,837</b>



# of Unique Clients Seen = this number represents the count of unique individuals, representing a household, who were registered as clients at The Jesse Tree and who came in throughout the year. These individuals may have come into the Jesse Tree more than once, but we are only counting them 1x the year.

*"A shoot will come up from the stem of Jesse; from his roots a branch will bear fruit." Isaiah (11:1)*



## The Jesse Tree 2012 Annual Report

"Connecting, Rebuilding, Uplifting"

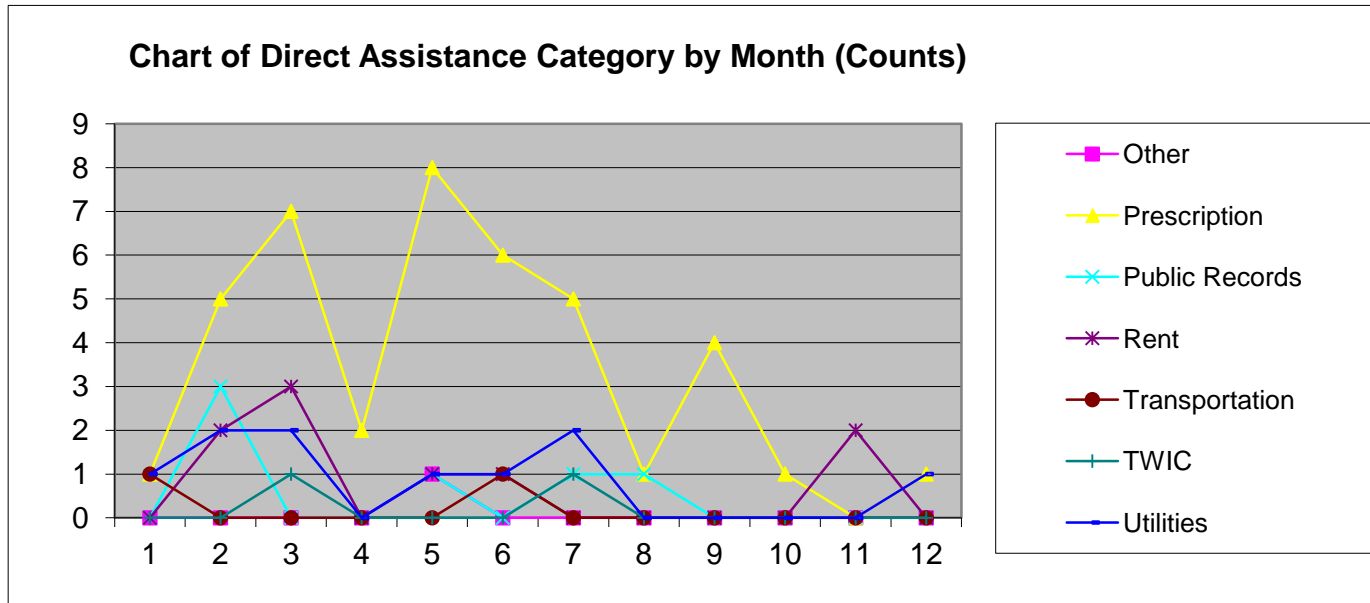
Direct Assistance by Month

### Total Count

Assistance Category	Jan.	Feb.	Mar.	Apr.	May	June	July	Aug.	Sept.	Oct.	Nov.	Dec.	Total
Other	0	0	0	0	1	0	0	0	0	0	0	0	1
Prescription	1	5	7	2	8	6	5	1	4	1	0	1	41
Public Records	0	3	0	0	1	0	1	1	0	0	0	0	6
Rent	0	2	3	0	1	1	0	0	0	0	2	0	9
Transportation	1	0	0	0	0	1	0	0	0	0	0	0	2
TWIC	0	0	1	0	0	0	1	0	0	0	0	0	2
Utilities	1	2	2	0	1	1	2	0	0	0	0	1	10
	3	12	13	2	12	9	9	2	4	1	2	2	71

### Total Cost

Assistance Category	Jan.	Feb.	Mar.	Apr.	May	June	July	Aug.	Sept.	Oct.	Nov.	Dec.	Total
Other	\$0	\$0	\$0	\$0	\$51	\$0	\$0	\$0	\$0	\$0	\$0	\$0	\$51.00
Prescription	\$90	\$581	\$586	\$136	\$520	\$727	\$732	\$125	\$140	\$10	\$0	\$35	\$3,682.49
Public Records	\$0	\$50	\$0	\$0	\$25	\$0	\$24	\$15	\$0	\$0	\$0	\$0	\$114.00
Rent	\$0	\$450	\$590	\$0	\$150	\$50	\$0	\$0	\$0	\$0	\$625	\$0	\$1,865.00
Transportation	\$80	\$0	\$80	\$0	\$0	\$50	\$0	\$0	\$0	\$0	\$0	\$0	\$210.00
TWIC	\$0	\$0	\$133	\$0	\$0	\$0	\$133	\$0	\$0	\$0	\$0	\$0	\$265.00
Utilities	\$100	\$225	\$300	\$0	\$178	\$124	\$110	\$0	\$0	\$0	\$0	\$141	\$1,177.05
	\$270	\$1,306	\$1,689	\$136	\$923	\$950	\$999	\$140	\$140	\$10	\$625	\$176	\$7,364.54





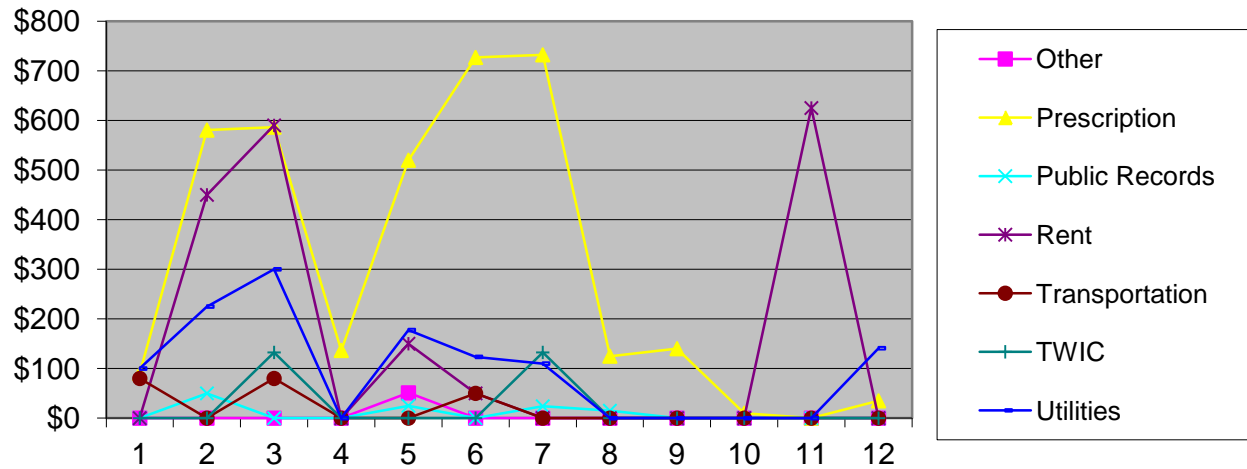
## The Jesse Tree 2012 Annual Report

"Connecting, Rebuilding, Uplifting"

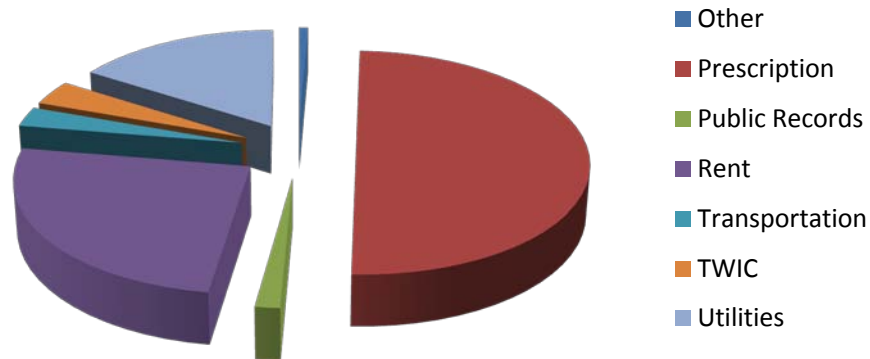
Direct Assistance by Month

Continued

### Chart of Direct Assistance Category by Month (Costs)



### Annual Direct Assistance \$\$





## The Jesse Tree 2012 Annual Report

"Connecting, Rebuilding, Uplifting"

Assistance/Services Other than Direct Assistance by Month

### Total Count

Category	Jan.	Feb.	Mar.	Apr.	May	June	July	Aug.	Sept.	Oct.	Nov.	Dec.	Total
Case Management	125	120	140	61	74	87	81	35	16	18	23	16	796
Chronic Conditions Mgmt	54	23	2	0	3	1	1	0	0	1	0	0	85
Consumable Medical Supplies	12	9	11	8	5	9	12	3	3	4	2	2	80
Diabetic Supplies	17	24	21	10	15	8	16	15	0	7	12	4	149
Disaster Preparedness/Relief	0	0	0	0	0	0	0	0	0	0	0	0	0
Health Equip Loan Prog	27	10	25	27	25	28	27	17	13	15	7	6	227
Medical Enrollment/Other	0	1	0	0	1	0	0	3	0	0	0	1	6
Nutrition	80	78	38	6	2	9	5	0	0	0	0	3	221
Other	0	0	1	0	0	0	0	0	0	0	0	0	1
Personal Supplies	5	16	11	2	1	1	3	0	1	0	0	0	40
Prescriptions	15	18	24	23	20	20	42	24	8	11	7	8	220
Rent	0	1	0	0	0	0	0	0	0	0	0	0	1
Transportation	0	1	1	0	0	0	0	0	0	0	0	0	2
	335	301	274	137	146	163	187	97	41	56	51	40	1,828

### Total Cost

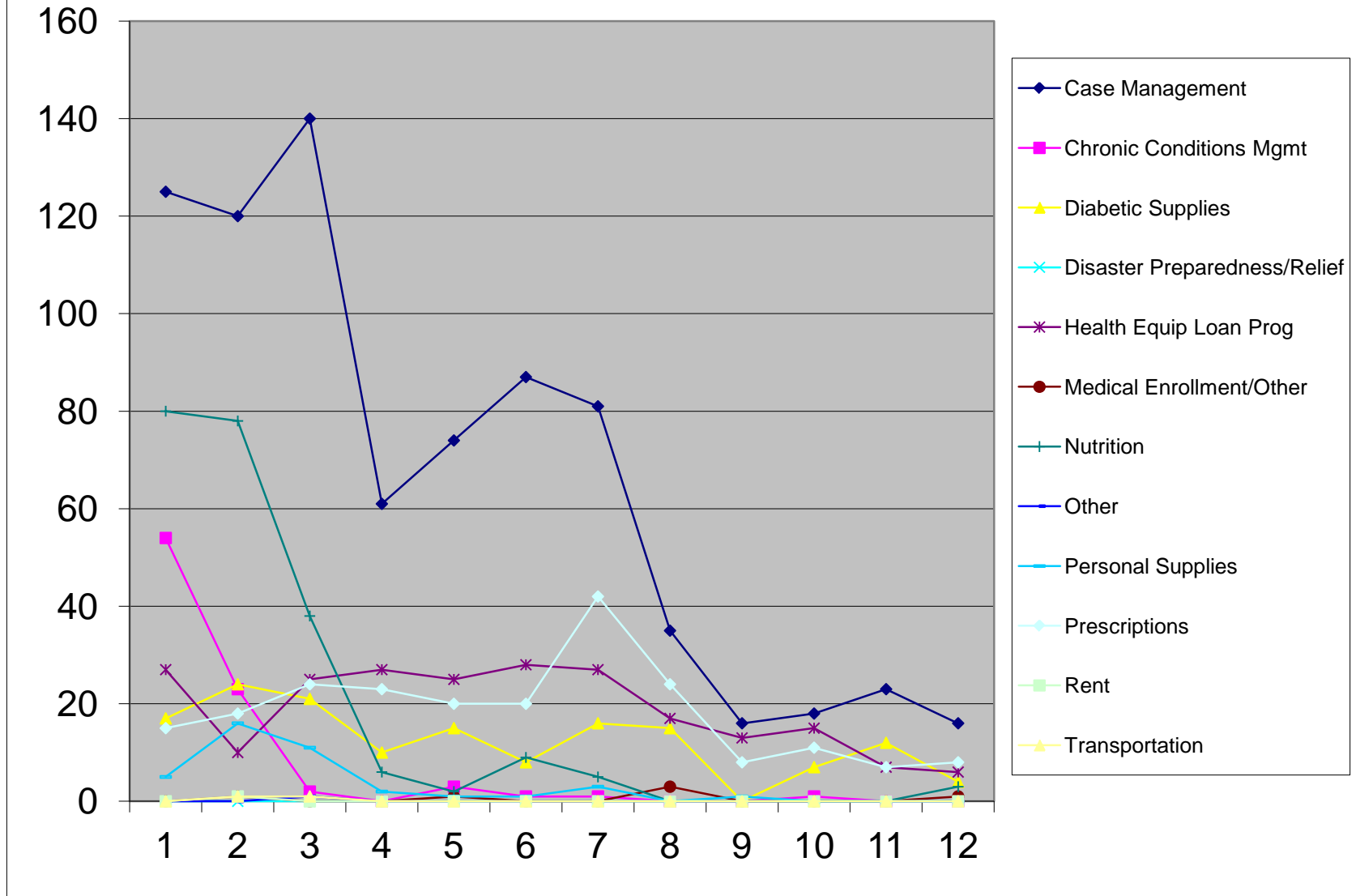
Category	Jan.	Feb.	Mar.	Apr.	May	June	July	Aug.	Sept.	Oct.	Nov.	Dec.	Total
Case Management	\$7,983	\$8,590	\$9,775	\$4,525	\$5,550	\$6,650	\$6,075	\$2,625	\$1,200	\$1,350	\$1,725	\$1,200	\$57,248
Chronic Conditions Mgmt	\$1,980	\$955	\$100	\$0	\$275	\$50	\$50	\$0	\$0	\$50	\$0	\$0	\$3,460
Consumable Medical Supplies	\$830	\$515	\$306	\$424	\$325	\$480	\$717	\$100	\$60	\$185	\$60	\$170	\$4,172
Diabetic Supplies	\$935	\$1,165	\$970	\$550	\$780	\$665	\$755	\$725	\$0	\$345	\$605	\$195	\$7,690
Disaster Preparedness/Relief	\$0	\$0	\$0	\$0	\$0	\$0	\$0	\$0	\$0	\$0	\$0	\$0	\$0
Health Equip Loan Prog	\$9,600	\$3,975	\$10,675	\$11,875	\$12,805	\$14,554	\$10,280	\$6,800	\$7,225	\$9,000	\$4,200	\$1,930	\$102,919
Medical Enrollment/Other	\$0	\$75	\$0	\$0	\$10	\$0	\$0	\$30	\$0	\$0	\$0	\$75	\$190
Nutrition	\$3,060	\$2,917	\$1,452	\$230	\$80	\$370	\$230	\$0	\$0	\$0	\$0	\$90	\$8,429
Other	\$0	\$0	\$5	\$0	\$0	\$0	\$0	\$0	\$0	\$0	\$0	\$0	\$5
Personal Supplies	\$80	\$230	\$65	\$10	\$30	\$60	\$75	\$0	\$5	\$0	\$0	\$0	\$555
Prescriptions	\$984	\$994	\$2,286	\$1,658	\$1,364	\$2,142	\$4,683	\$1,077	\$259	\$651	\$563	\$1,412	\$18,073
Rent	\$0	\$500	\$0	\$0	\$0	\$0	\$0	\$0	\$0	\$0	\$0	\$0	\$500
Transportation	\$0	\$20	\$20	\$0	\$0	\$0	\$0	\$0	\$0	\$0	\$0	\$0	\$40
	\$25,452	\$19,936	\$25,654	\$19,272	\$21,219	\$24,971	\$22,865	\$11,357	\$8,749	\$11,581	\$7,153	\$5,072	\$203,281

*"A shoot will come up from the stem of Jesse; from his roots a branch will bear fruit." Isaiah (11:1)*



**The Jesse Tree 2012 Annual Report**  
"Connecting, Rebuilding, Uplifting"  
Assistance/Services Other than Direct Assistance by Month

**Chart of Assistance/Services Other Than Direct Assistance by Month (Counts)**



"A shoot will come up from the stem of Jesse; from his roots a branch will bear fruit." Isaiah (11:1)



## The Jesse Tree 2012 Annual Report

"Connecting, Rebuilding, Uplifting"  
Referrals (External) by Month

### **Total Count**

Category	Jan.	Feb.	Mar.	Apr.	May	June	July	Aug.	Sept.	Oct.	Nov.	Dec.	Total
Case Management	0	2	6	0	0	0	2	0	0	0	0	0	10
Chronic Conditions Mgmt	3	4	9	5	1	5	15	7	5	5	10	6	75
Education	1	0	0	0	0	0	0	0	0	0	0	0	1
Employment	0	0	2	1	0	0	1	1	0	0	0	0	5
Family Support	0	1	2	0	0	1	0	0	0	0	0	0	4
Financial	0	7	13	4	5	0	3	9	0	1	2	1	45
Legal	1	1	1	0	0	0	2	0	0	0	0	0	5
Medical	14	33	46	7	13	24	66	35	28	21	22	16	325
Ministerial	0	0	0	0	0	0	0	0	0	0	0	0	0
Nutrition	55	67	10	12	2	6	17	2	0	0	2	1	174
Other	0	0	0	0	0	0	0	0	0	0	0	0	0
Shelter	0	0	0	0	0	0	0	0	0	0	0	0	0
Social	2	3	14	6	0	1	3	1	0	0	0	0	30
Transportation	0	0	0	0	0	0	1	0	0	0	0	0	1
	76	118	103	35	21	37	110	55	33	27	36	24	675

### **Total Cost**

Category	Jan.	Feb.	Mar.	Apr.	May	June	July	Aug.	Sept.	Oct.	Nov.	Dec.	Total
Case Management	\$0	\$825	\$2,475	\$0	\$0	\$0	\$825	\$0	\$0	\$0	\$0	\$0	\$4,125
Chronic Conditions Mgmt	\$75	\$100	\$225	\$125	\$25	\$125	\$375	\$175	\$125	\$125	\$250	\$150	\$1,875
Education	\$25	\$0	\$0	\$0	\$0	\$0	\$0	\$0	\$0	\$0	\$0	\$0	\$25
Employment	\$0	\$0	\$150	\$75	\$0	\$0	\$75	\$75	\$0	\$0	\$0	\$0	\$375
Family Support	\$0	\$75	\$150	\$0	\$0	\$75	\$0	\$0	\$0	\$0	\$0	\$0	\$300
Financial	\$0	\$2,450	\$4,550	\$1,400	\$1,750	\$0	\$8,200	\$3,150	\$0	\$350	\$700	\$350	\$22,900
Legal	\$75	\$75	\$75	\$0	\$0	\$0	\$150	\$0	\$0	\$0	\$0	\$0	\$375
Medical	\$7,990	\$11,580	\$12,860	\$750	\$8,315	\$3,600	\$36,405	\$4,175	\$4,070	\$2,940	\$2,900	\$2,000	\$97,585
Ministerial	\$0	\$0	\$0	\$0	\$0	\$0	\$0	\$0	\$0	\$0	\$0	\$0	\$0
Nutrition	\$2,320	\$3,706	\$1,326	\$520	\$100	\$290	\$730	\$80	\$0	\$0	\$90	\$40	\$9,202
Other	\$0	\$0	\$0	\$0	\$0	\$0	\$0	\$0	\$0	\$0	\$0	\$0	\$0
Shelter	\$0	\$0	\$0	\$0	\$0	\$0	\$0	\$0	\$0	\$0	\$0	\$0	\$0
Social	\$50	\$125	\$550	\$200	\$0	\$25	\$75	\$25	\$0	\$0	\$0	\$0	\$1,050
Transportation	\$0	\$0	\$0	\$0	\$0	\$0	\$25	\$0	\$0	\$0	\$0	\$0	\$25
	\$10,535	\$18,936	\$22,361	\$3,070	\$10,190	\$4,115	\$46,860	\$7,680	\$4,195	\$3,415	\$3,940	\$2,540	\$137,837

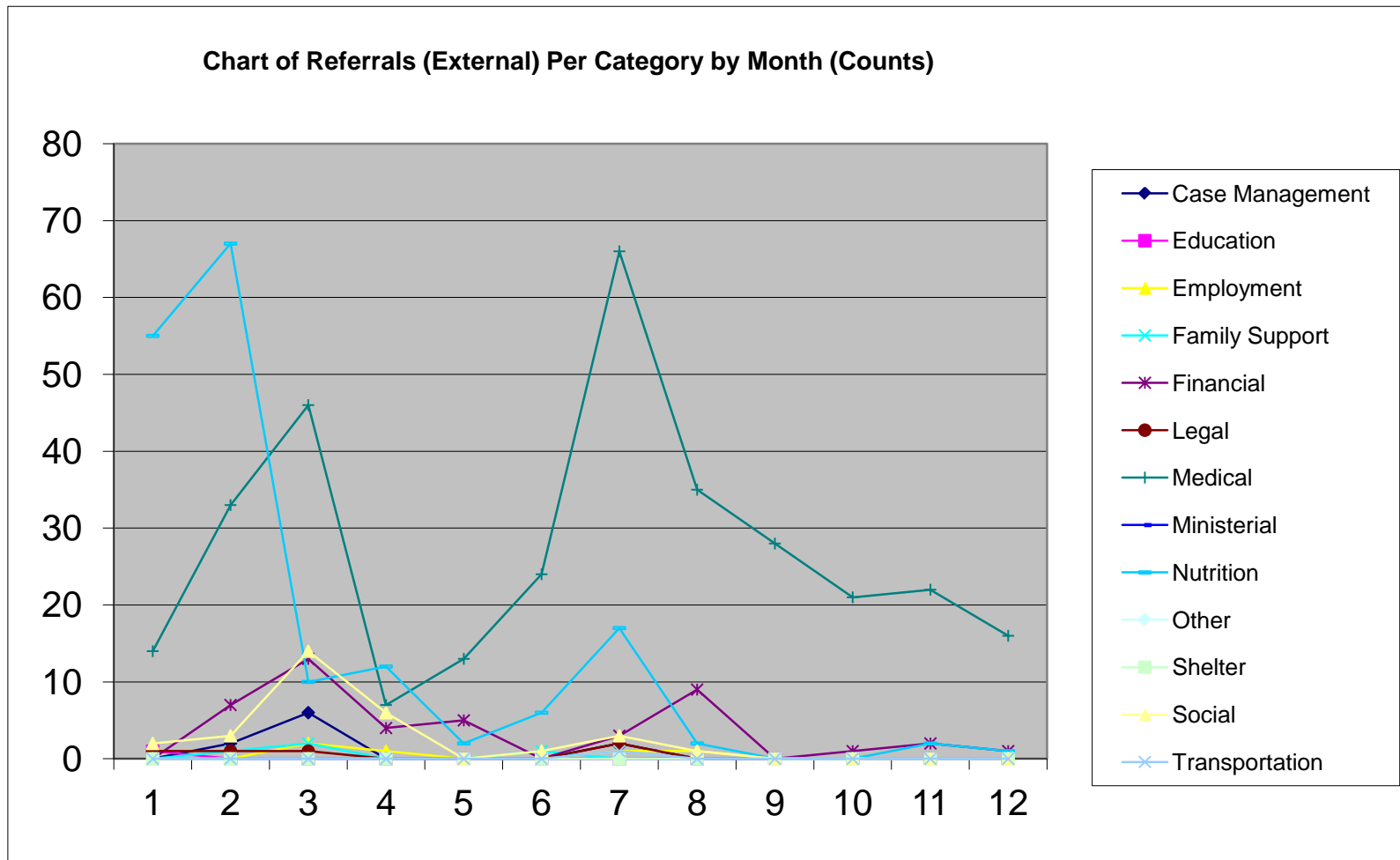
"A shoot will come up from the stem of Jesse; from his roots a branch will bear fruit." Isaiah (11:1)



## The Jesse Tree 2012 Annual Report

"Connecting, Rebuilding, Uplifting"

Referrals (External) by Month





**The Jesse Tree 2012 Annual Report**  
 "Connecting, Rebuilding, Uplifting"  
 Classes by Month

# of Classes	Jan.	Feb.	Mar.	Apr.	May	June	July	Aug.	Sept.	Oct.	Nov.	Dec.	Total
Chronic Conditions Mgmt	0	2	4	3	5	3	4	0	0	0	0	2	23
Cooking	0	0	2	1	0	0	0	0	0	0	0	0	3
Diabetes	8	15	16	11	6	8	10	1	0	0	2	4	81
Diabetes Spanish	5	10	11	4	1	2	3	1	0	1	3	1	42
Diabetes Support Group	0	1	1	0	0	1	0	0	0	0	0	0	3
Hypertension	0	0	0	0	0	0	0	0	0	0	0	0	0
Nutrition	0	0	0	0	0	0	0	0	0	0	0	0	0
Stress	0	0	0	0	0	0	0	0	0	0	0	0	0
	13	28	34	19	12	14	17	2	0	1	5	7	152

# of Attendees	Jan.	Feb.	Mar.	Apr.	May	June	July	Aug.	Sept.	Oct.	Nov.	Dec.	Total
Chronic Conditions Mgmt	0	2	15	8	27	15	30	0	0	0	0	2	99
Cooking	0	0	9	5	0	0	0	0	0	0	0	0	14
Diabetes	44	92	103	91	39	55	49	9	0	0	8	12	502
Diabetes Spanish	56	89	82	21	11	7	21	8	0	10	24	1	330
Diabetes Support Group	0	8	10	0	0	7	0	0	0	0	0	0	25
Hypertension	0	0	0	0	0	0	0	0	0	0	0	0	0
Nutrition	0	0	0	0	0	0	0	0	0	0	0	0	0
Stress	0	0	0	0	0	0	0	0	0	0	0	0	0
	100	191	219	125	77	84	100	17	0	10	32	15	970

# of Family Members per Household	Jan.	Feb.	Mar.	Apr.	May	June	July	Aug.	Sept.	Oct.	Nov.	Dec.	Total
Chronic Conditions Mgmt	0	4	23	12	45	22	37	0	0	0	0	2	145
Cooking	0	0	13	7	0	0	0	0	0	0	0	0	20
Diabetes	72	132	171	138	47	71	66	13	0	0	9	12	731
Diabetes Spanish	148	282	211	54	25	15	40	11	0	21	60	7	874
Diabetes Support Group	0	8	10	0	0	7	0	0	0	0	0	0	25
Hypertension	0	0	0	0	0	0	0	0	0	0	0	0	0
Nutrition	0	0	0	0	0	0	0	0	0	0	0	0	0
Stress	0	0	0	0	0	0	0	0	0	0	0	0	0
	220	426	428	211	117	115	143	24	0	21	69	21	1795

"A shoot will come up from the stem of Jesse; from his roots a branch will bear fruit." Isaiah (11:1)





## The Jesse Tree 2012 Annual Report

"Connecting, Rebuilding, Uplifting"

Food Fairs by Month

Month	# of FF	0-17	18-64	65+	Unk	#ADULT	C	B	H	A	O	Unk	Sum Eth	Sum Ages	HH
Jan.	6	923	1,480	519	16	1,999	517	1,088	1,200	41	86	6	2,938	2,938	1,083
Feb.	7	1,099	1,704	592	6	2,296	690	1,058	1,566	46	41	0	3,401	3,401	1,249
Mar.	10	1,570	2,323	747	5	3,059	590	2,227	1,769	12	47	0	4,645	4,645	1,623
<b>Totals</b>	<b>23</b>	<b>3,592</b>	<b>5,507</b>	<b>1,858</b>	<b>27</b>	<b>7,354</b>	<b>1,797</b>	<b>4,373</b>	<b>4,535</b>	<b>99</b>	<b>174</b>	<b>6</b>	<b>10,984</b>	<b>10,984</b>	<b>3,955</b>
Apr.	7	1,243	1,872	555	1	2,427	471	1,661	1,412	22	12	93	3,671	3,671	1,242
May	5	836	1,147	379	2	1,526	346	1,156	721	12	0	129	2,364	2,364	912
June	7	1,123	1,736	520	4	2,256	553	1,651	1,138	17	15	9	3,383	3,383	1,197
<b>Totals</b>	<b>19</b>	<b>3,202</b>	<b>4,755</b>	<b>1,454</b>	<b>7</b>	<b>6,209</b>	<b>1,370</b>	<b>4,468</b>	<b>3,271</b>	<b>51</b>	<b>27</b>	<b>231</b>	<b>9,418</b>	<b>9,418</b>	<b>3,351</b>
July	9	1,231	1,738	547	5	2,285	743	1,459	1,193	52	74	0	3,521	3,521	1,179
Aug.	7	845	1,314	487	4	1,801	500	1,117	842	13	178	0	2,650	2,650	967
Sept.	6	927	1,381	575	25	1,956	519	1,343	979	4	63	0	2,908	2,908	1,073
<b>Totals</b>	<b>22</b>	<b>3,003</b>	<b>4,433</b>	<b>1,609</b>	<b>34</b>	<b>6,042</b>	<b>1,762</b>	<b>3,919</b>	<b>3,014</b>	<b>69</b>	<b>315</b>	<b>0</b>	<b>9,079</b>	<b>9,079</b>	<b>3,219</b>
Oct.	6	865	1,292	526	13	1,817	463	1,168	965	29	20	51	2,696	2,696	1,007
Nov.	8	1,141	1,661	470	0	2,131	671	1,156	1,395	22	14	14	3,272	3,272	1,059
Dec.	4	417	1,147	288	2		436	788	456	7	10	157	1,854	1,854	665
<b>Totals</b>	<b>18</b>	<b>2,423</b>	<b>4,100</b>	<b>1,284</b>	<b>15</b>	<b>3,948</b>	<b>1,570</b>	<b>3,112</b>	<b>2,816</b>	<b>58</b>	<b>44</b>	<b>222</b>	<b>7,822</b>	<b>7,822</b>	<b>2,731</b>
	<b>82</b>	<b>12,220</b>	<b>18,795</b>	<b>6,205</b>	<b>83</b>	<b>23,553</b>	<b>6,499</b>	<b>15,872</b>	<b>13,636</b>	<b>277</b>	<b>560</b>	<b>459</b>	<b>37,303</b>	<b>37,303</b>	<b>13,256</b>

"A shoot will come up from the stem of Jesse; from his roots a branch will bear fruit." Isaiah (11:1)



## The Jesse Tree 2012 Annual Report

"Connecting, Rebuilding, Uplifting"  
Pantry by Month

Month	0-17	18-64	65+	Unk	#ADULT	C	B	H	A	O	Unk	Sum Eth	Sum Ages	HH
Jan.	0	0	0	0	0	0	0	0	0	0	0	0	0	0
Feb.	23	71	6	0	77	21	58	18	3	0	0	100	100	42
Mar.	0	0	0	0	0	0	0	0	0	0	0	0	0	0
<b>Totals</b>	<b>23</b>	<b>71</b>	<b>6</b>	<b>0</b>	<b>77</b>	<b>21</b>	<b>58</b>	<b>18</b>	<b>3</b>	<b>0</b>	<b>0</b>	<b>100</b>	<b>100</b>	<b>42</b>
Apr.	0	0	0	0	0	0	0	0	0	0	0	0	0	0
May	0	0	0	0	0	0	0	0	0	0	0	0	0	0
June	0	0	0	0	0	0	0	0	0	0	0	0	0	0
<b>Totals</b>	<b>0</b>	<b>0</b>	<b>0</b>	<b>0</b>	<b>0</b>	<b>0</b>	<b>0</b>	<b>0</b>	<b>0</b>	<b>0</b>	<b>0</b>	<b>0</b>	<b>0</b>	<b>0</b>
July	0	0	0	0	0	0	0	0	0	0	0	0	0	0
Aug.	0	0	0	0	0	0	0	0	0	0	0	0	0	0
Sept.	0	0	0	0	0	0	0	0	0	0	0	0	0	0
<b>Totals</b>	<b>0</b>	<b>0</b>	<b>0</b>	<b>0</b>	<b>0</b>	<b>0</b>	<b>0</b>	<b>0</b>	<b>0</b>	<b>0</b>	<b>0</b>	<b>0</b>	<b>0</b>	<b>0</b>
Oct.	0	0	0	0	0	0	0	0	0	0	0	0	0	0
Nov.	0	0	0	0	0	0	0	0	0	0	0	0	0	0
Dec.	0	0	0	0	0	0	0	0	0	0	0	0	0	0
<b>Totals</b>	<b>0</b>	<b>0</b>	<b>0</b>	<b>0</b>	<b>0</b>	<b>0</b>	<b>0</b>	<b>0</b>	<b>0</b>	<b>0</b>	<b>0</b>	<b>0</b>	<b>0</b>	<b>0</b>
	<b>23</b>	<b>71</b>	<b>6</b>	<b>0</b>	<b>77</b>	<b>21</b>	<b>58</b>	<b>18</b>	<b>3</b>	<b>0</b>	<b>0</b>	<b>100</b>	<b>100</b>	<b>42</b>



## The Jesse Tree 2012 Annual Report

"Connecting, Rebuilding, Uplifting"  
Senior Food Boxes by Month

Month	0-17	18-64	65+	Unk	#ADULT	C	B	H	A	O	Unk	Sum Eth	Sum Ages	HH
Jan.	0	80	142	0	222	78	93	39	6	3	3	222	222	218
Feb.	0	88	141	0	229	80	94	45	6	4	0	229	229	225
Mar.	0	77	132	13	209	74	96	41	6	4	1	222	222	217
<b>Totals</b>	<b>0</b>	<b>245</b>	<b>415</b>	<b>13</b>	<b>660</b>	<b>232</b>	<b>283</b>	<b>125</b>	<b>18</b>	<b>11</b>	<b>4</b>	<b>673</b>	<b>673</b>	<b>660</b>
Apr.	0	0	0	0	0	0	0	0	0	0	0	0	0	0
May	0	0	0	0	0	0	0	0	0	0	0	0	0	0
June	0	12	37	0	49	21	20	6	0	1	1	49	49	49
<b>Totals</b>	<b>0</b>	<b>12</b>	<b>37</b>	<b>0</b>	<b>49</b>	<b>21</b>	<b>20</b>	<b>6</b>	<b>0</b>	<b>1</b>	<b>1</b>	<b>49</b>	<b>49</b>	<b>49</b>
July	0	0	0	0	0	0	0	0	0	0	0	0	0	0
Aug.	0	0	0	0	0	0	0	0	0	0	0	0	0	0
Sept.	0	0	0	0	0	0	0	0	0	0	0	0	0	0
<b>Totals</b>	<b>0</b>	<b>0</b>	<b>0</b>	<b>0</b>	<b>0</b>	<b>0</b>	<b>0</b>	<b>0</b>	<b>0</b>	<b>0</b>	<b>0</b>	<b>0</b>	<b>0</b>	<b>0</b>
Oct.	0	0	0	0	0	0	0	0	0	0	0	0	0	0
Nov.	0	0	0	0	0	0	0	0	0	0	0	0	0	0
Dec.	0	0	0	0	0	0	0	0	0	0	0	0	0	0
<b>Totals</b>	<b>0</b>	<b>0</b>	<b>0</b>	<b>0</b>	<b>0</b>	<b>0</b>	<b>0</b>	<b>0</b>	<b>0</b>	<b>0</b>	<b>0</b>	<b>0</b>	<b>0</b>	<b>0</b>
	<b>0</b>	<b>257</b>	<b>452</b>	<b>13</b>	<b>709</b>	<b>253</b>	<b>303</b>	<b>131</b>	<b>18</b>	<b>12</b>	<b>5</b>	<b>722</b>	<b>722</b>	<b>709</b>



**The Jesse Tree 2012 Annual Report**  
 "Connecting, Rebuilding, Uplifting"  
 Hospitality & Snack Pack by Month

**Hospitality**

Month	0-17	18-64	65+	Unk	#ADULT	C	B	H	A	O	Unk	Sum Eth	Sum Ages	HH
Jan.	0	0	0	0	0	0	0	0	0	0	0	0	0	0
Feb.	0	1	0	0	0	0	0	0	1	0	0	1	1	1
Mar.	0	2	0	0	0	2	0	0	0	0	0	2	2	1
<b>Totals</b>	<b>0</b>	<b>3</b>	<b>0</b>	<b>0</b>	<b>0</b>	<b>2</b>	<b>0</b>	<b>1</b>	<b>0</b>	<b>0</b>	<b>0</b>	<b>3</b>	<b>3</b>	<b>2</b>
Apr.	0	0	0	0	0	0	0	0	0	0	0	0	0	0
May	0	0	0	0	0	0	0	0	0	0	0	0	0	0
June	0	0	0	0	0	0	0	0	0	0	0	0	0	0
<b>Totals</b>	<b>0</b>	<b>0</b>	<b>0</b>	<b>0</b>	<b>0</b>	<b>0</b>	<b>0</b>	<b>0</b>	<b>0</b>	<b>0</b>	<b>0</b>	<b>0</b>	<b>0</b>	<b>0</b>
July	0	0	0	0	0	0	0	0	0	0	0	0	0	0
Aug.	0	0	0	0	0	0	0	0	0	0	0	0	0	0
Sept.	0	0	0	0	0	0	0	0	0	0	0	0	0	0
<b>Totals</b>	<b>0</b>	<b>0</b>	<b>0</b>	<b>0</b>	<b>0</b>	<b>0</b>	<b>0</b>	<b>0</b>	<b>0</b>	<b>0</b>	<b>0</b>	<b>0</b>	<b>0</b>	<b>0</b>
Oct.	0	0	0	0	0	0	0	0	0	0	0	0	0	0
Nov.	0	0	0	0	0	0	0	0	0	0	0	0	0	0
Dec.	0	0	0	0	0	0	0	0	0	0	0	0	0	0
<b>Totals</b>	<b>0</b>	<b>0</b>	<b>0</b>	<b>0</b>	<b>0</b>	<b>0</b>	<b>0</b>	<b>0</b>	<b>0</b>	<b>0</b>	<b>0</b>	<b>0</b>	<b>0</b>	<b>0</b>
<b>Totals</b>	<b>0</b>	<b>3</b>	<b>0</b>	<b>0</b>	<b>0</b>	<b>2</b>	<b>0</b>	<b>1</b>	<b>0</b>	<b>0</b>	<b>0</b>	<b>3</b>	<b>3</b>	<b>2</b>

**Snack Pack**

Month	0-17	18-64	65+	Unk	#ADULT	C	B	H	A	O	Unk	Sum Eth	Sum Ages	HH
Jan.	0	0	0	0	0	0	0	0	0	0	0	0	0	0
Feb.	2	3	0	0	3	4	0	0	0	0	1	5	5	3
Mar.	0	0	0	0	0	0	0	0	0	0	0	0	0	0
<b>Totals</b>	<b>2</b>	<b>3</b>	<b>0</b>	<b>0</b>	<b>3</b>	<b>4</b>	<b>0</b>	<b>0</b>	<b>0</b>	<b>0</b>	<b>1</b>	<b>5</b>	<b>5</b>	<b>3</b>
Apr.	0	0	0	0	0	0	0	0	0	0	0	0	0	0
May	0	0	0	0	0	0	0	0	0	0	0	0	0	0
June	0	0	0	0	0	0	0	0	0	0	0	0	0	0
<b>Totals</b>	<b>0</b>	<b>0</b>	<b>0</b>	<b>0</b>	<b>0</b>	<b>0</b>	<b>0</b>	<b>0</b>	<b>0</b>	<b>0</b>	<b>0</b>	<b>0</b>	<b>0</b>	<b>0</b>
July	0	0	0	0	0	0	0	0	0	0	0	0	0	0
Aug.											0	0		
Sept.											0	0		
<b>Totals</b>	<b>0</b>	<b>0</b>	<b>0</b>	<b>0</b>	<b>0</b>	<b>0</b>	<b>0</b>	<b>0</b>	<b>0</b>	<b>0</b>	<b>0</b>	<b>0</b>	<b>0</b>	<b>0</b>
Oct.												0	0	
Nov.												0	0	
Dec.												0	0	
<b>Totals</b>	<b>0</b>	<b>0</b>	<b>0</b>	<b>0</b>	<b>0</b>	<b>0</b>	<b>0</b>	<b>0</b>	<b>0</b>	<b>0</b>	<b>0</b>	<b>0</b>	<b>0</b>	<b>0</b>
<b>Totals</b>	<b>2</b>	<b>3</b>	<b>0</b>	<b>0</b>	<b>3</b>	<b>4</b>	<b>0</b>	<b>0</b>	<b>0</b>	<b>0</b>	<b>1</b>	<b>5</b>	<b>5</b>	<b>3</b>